

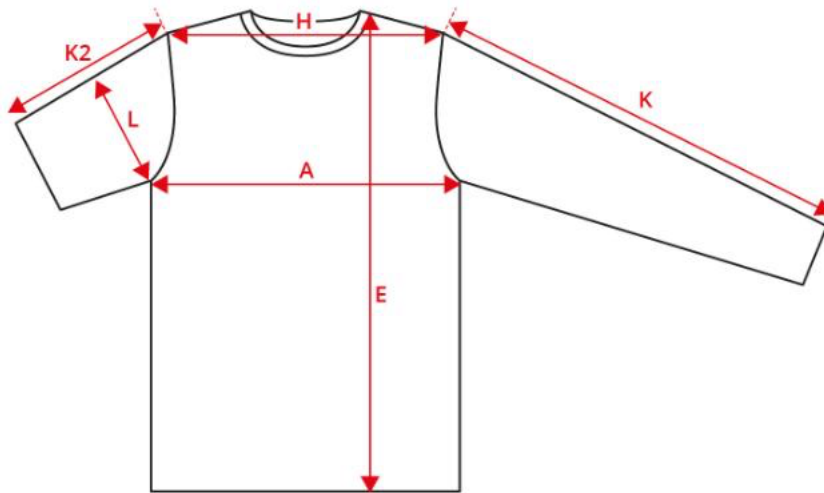
NO.
0545

Long-sleeved polo shirt | stretch | women



Description (measured in cm)	XS	S	M	L	XL	2XL	3XL	4XL	5XL	6XL
A: ½ Chest width	41	44	48	52	56	60	64	68	72	76
E: Front length from high point shoulder	61	63	65	67	69	71	73	75	77	79
H: Shoulder to shoulder	35	37	40	44	48	52	56	59	63	66
K: Sleeve length - long	59	60	61	61	61	61	61	61	61	61
L: ½ upper arm width	16.5	17.5	18.5	19.5	20.5	21.5	22.5	23.5	24.5	25.5

How to measure



Tolerance +/- in cm

A	E	H	K	K2	L
1.5	1.5	1.5	1.5	1	1

The measurements in a product measurement chart refer to measurements made directly on the clothing. Lay the garment out flat on an even surface without stretching it. Take the measurements as shown by the arrows and select the size that fits. Use a tape measure for the best results. The tolerances in the measurement chart are based on when the item is received from ID® and not